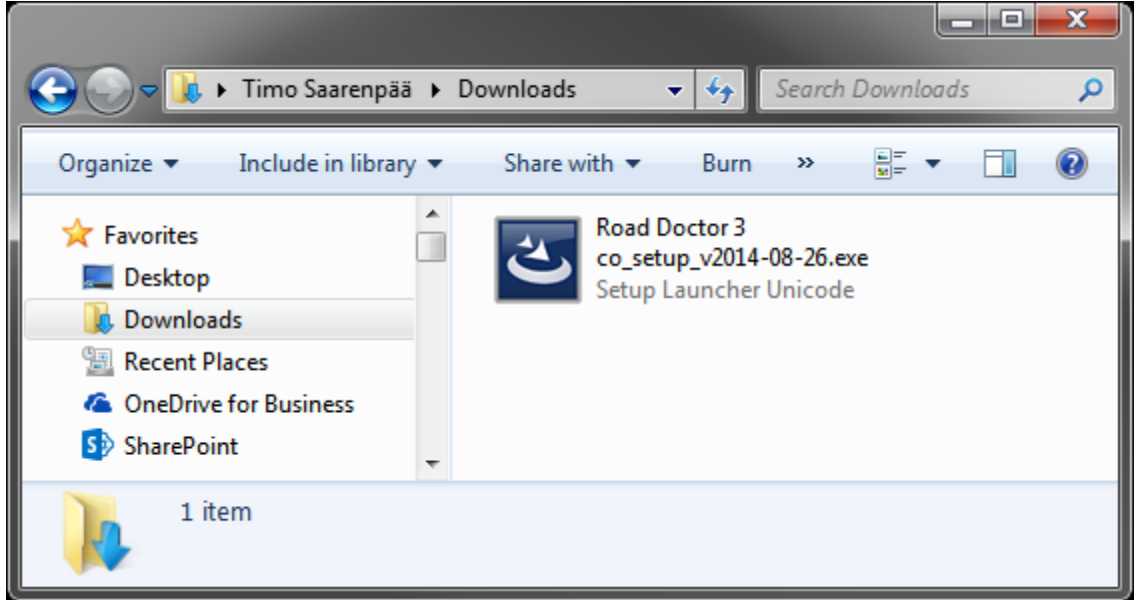
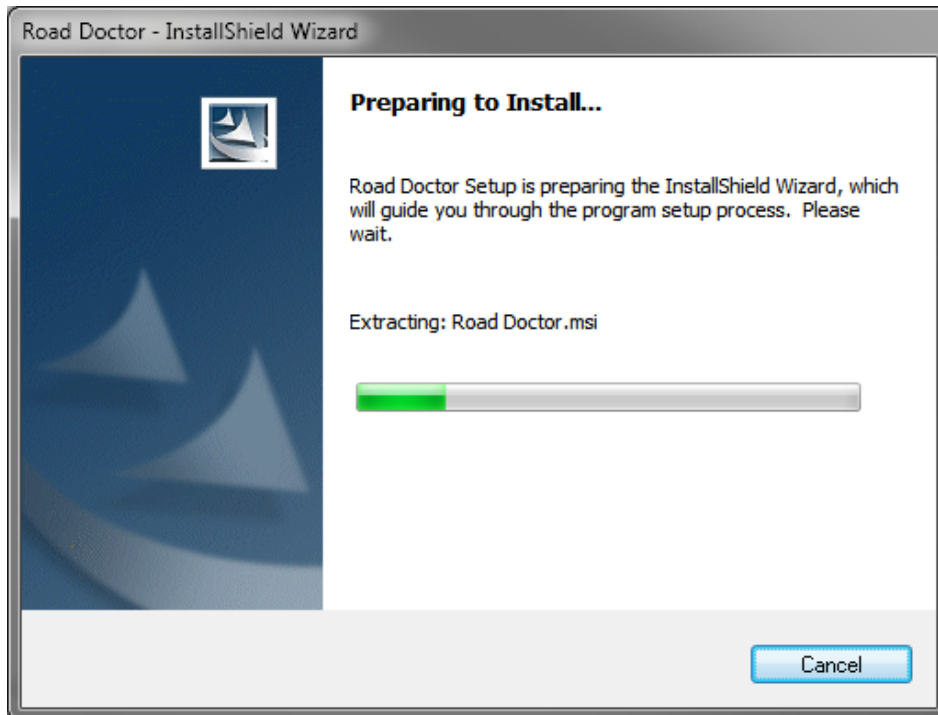


# Road Doctor 3 installation

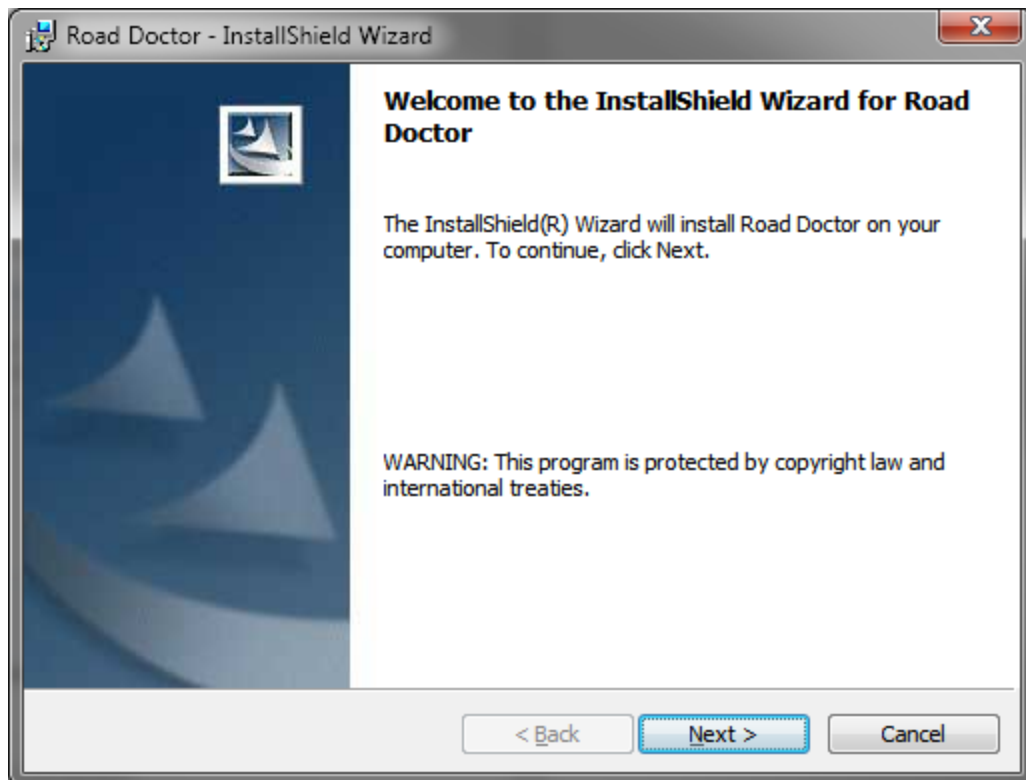
1. Download and run setup package



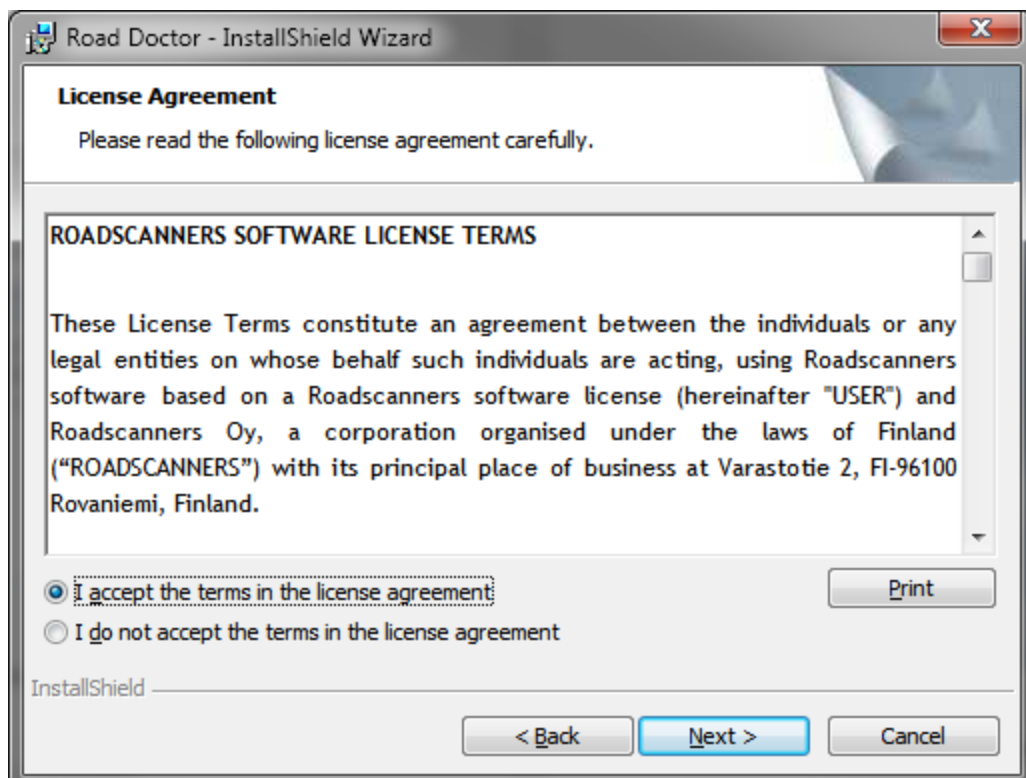
2. Wait until windows extracts installation files to your computer



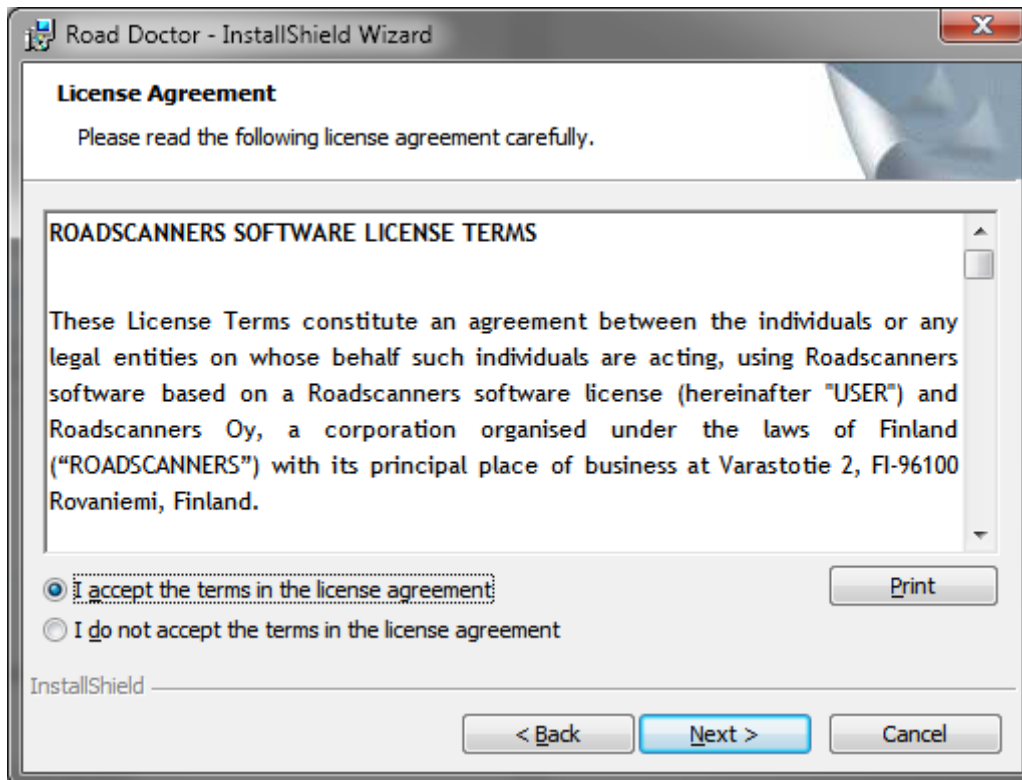
3. Click Next



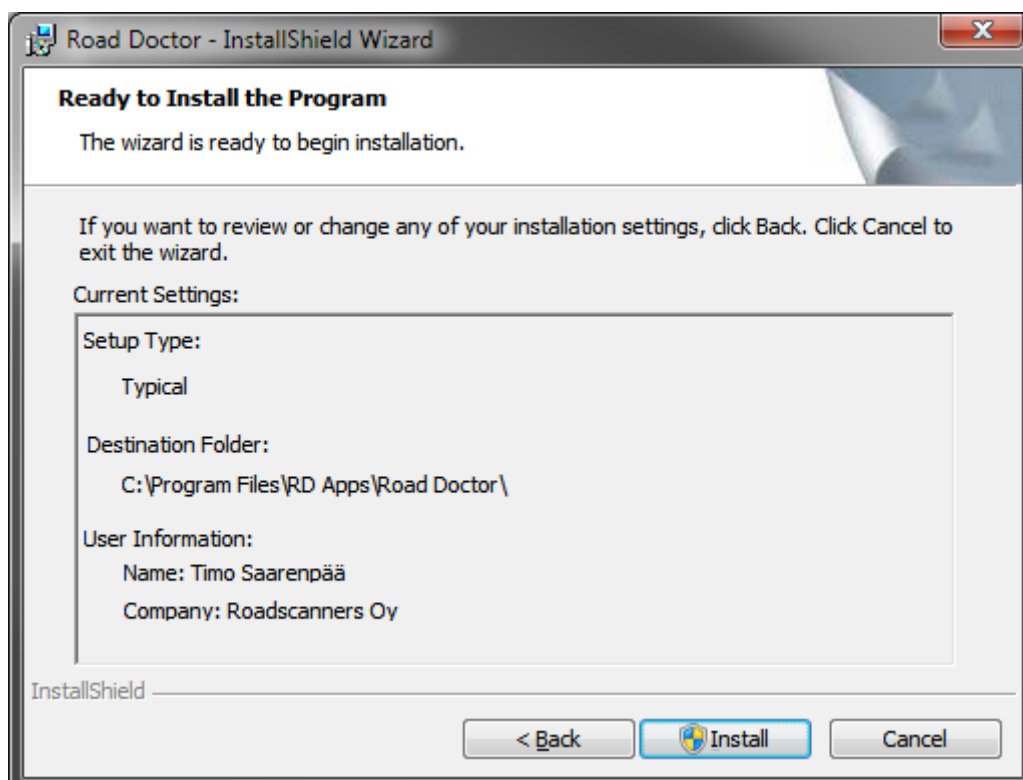
4. Read license terms. To install Road Doctor, you need to accept terms. Click Next



5. Change Destination Folder if needed. Click Next



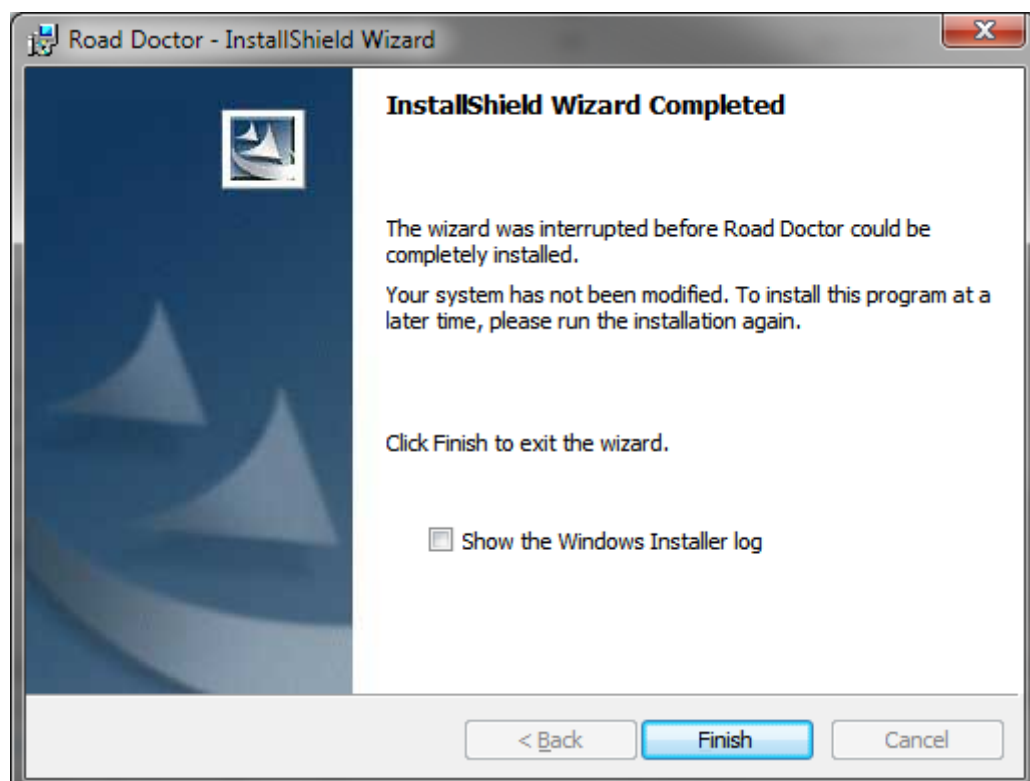
6. Press "Install". Depending on your Windows settings, you might be asked about user rights for the setup.



7. Wait until installation completed. The installation takes time because installation package runs an optimization routine for Road Doctor. You can monitor the process from the windows task manager (mscorsvw.exe - .NET runtime optimization service)



8. Press Finish



## 9. Start program from the start menu

